

---

## Checking the firmware version

---

Before beginning to update the firmware, check the firmware version of the CA-XLR2d being used.

---

### Preparing

- Detach the CA-XLR2d from the camera unit before updating the firmware.
- Disconnect all cables connected to the unit.

#### ATTENTION

##### For Windows

Use a computer running Windows 10 or later to conduct firmware updates.

---

## Downloading the firmware updater

### For Windows

1. Download the firmware updater for Windows (zip file) from the TEAC Global Site (<http://teac-global.com/>) and save it on the computer to be used.
2. Uncompress the saved zip file on the desktop or another location to generate the updater execution file (exe file).

### For Mac

Download the Mac firmware updater (as a ZIP file) for the operating system you are using from the TEAC Global Site (<http://teac-global.com/>) and save it on the computer.



#### NOTE

Depending on the computer's settings, the downloaded ZIP file might not have opened automatically. In this case, unzip the ZIP file to access the disk image file.

---

## Connecting

Use a USB cable to connect this unit to the computer.

- After connecting them, confirm that both the  and  POWER SUPPLY indicators on the unit are lit.

#### NOTE

The USB port of this unit is specifically for firmware updates. Bus power from the computer USB port will provide the necessary power to the unit for the firmware update.

## Checking the firmware version

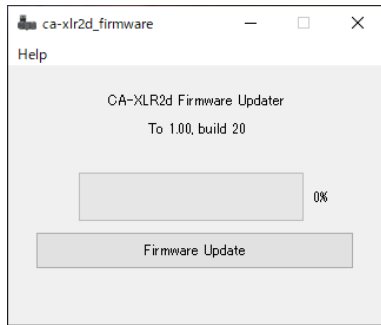
### For Windows

1. Double-click "ca-xlr2d\_firmware.exe" inside the folder uncompressed earlier to launch the updater.

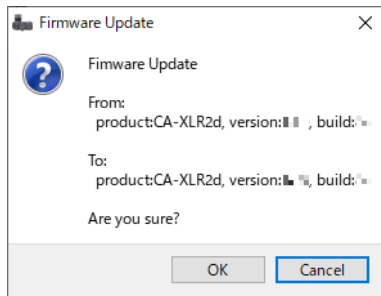
#### ATTENTION

Leave "ca-xlr2d\_firmware.exe" in the uncompressed folder when launching it.

2. Click the "Firmware Update" button on the updater screen.



3. The current firmware version is shown under "From" and the update version is shown under "To".



4. Click on the "Cancel" button to close the updater window.

### For Mac

1. Double-click the disk image file that you just downloaded.



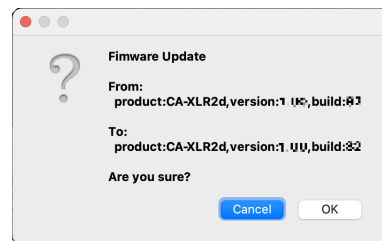
2. Double-click the application shown below to launch the firmware updater.



3. Click the "Firmware Update" button on the updater screen.



4. The current firmware version is shown under "From" and the update version is shown under "To".



5. Click on the "Cancel" button to close the updater window.

---

## Procedures for updating the firmware

---

**NOTE**

The CA-XLR2d updater may contain an update program for the shoe mount adapters.

Please check the contents of the update in the release notes. In case the shoe mount adapter requires to be updated, attach the shoe mount adapter to the main unit before proceeding with all updates.

If you own multiple adapters that require to be updated, make sure to attach each one of them to the main unit to update them.

See "Updating the firmware" on page 4 for the update procedure. Moreover, please be sure to update the firmware of the main unit regardless of the shoe mount adapter in use.

---

### Preparing

- Detach the CA-XLR2d from the camera unit before updating the firmware.
- Disconnect all cables connected to the unit.

**ATTENTION****For Windows**

Use a computer running Windows 10 or later to conduct firmware updates.

---

### Downloading the firmware updater

**For Windows**

1. Download the firmware updater for Windows (zip file) from the TASCAM website (<https://tascam.jp/int/product/ca-xlr2d/docs>) and save it on the computer to be used.
2. Uncompress the saved zip file on the desktop or another location to generate the updater execution file (exe file).

**For Mac**

Download the Mac firmware updater (as a ZIP file) for the operating system you are using from the TASCAM website (<https://tascam.jp/int/product/ca-xlr2d/docs>) and save it on the computer.

**NOTE**

Depending on the computer's settings, the downloaded ZIP file might not have opened automatically. In this case, unzip the ZIP file to access the disk image file.

---



### Connecting

1. If you have a shoe mount adapter, (CA-AK1-C/CA-AK1-F), connect it to the main unit before conducting the firmware update.
  - Updating the firmware of this unit with a shoe mount adapter (CA-AK1-C/CA-AK1-F) connected will update the firmware of that adapter at the same time.

**NOTE**

The cold shoe mount adapter (CA-AK1-AN) has no firmware installed. Therefore, the firmware update of the shoe mount adapter will not be executed even if it is attached to the main unit.

2. Use a USB cable to connect this unit to the computer.

- After connecting them, confirm that both the  and  POWER SUPPLY indicators on the unit are lit.

**NOTE**

The USB port of this unit is specifically for firmware updates. Bus power from the computer USB port will provide the necessary power to the unit for the firmware update.

## Updating the firmware

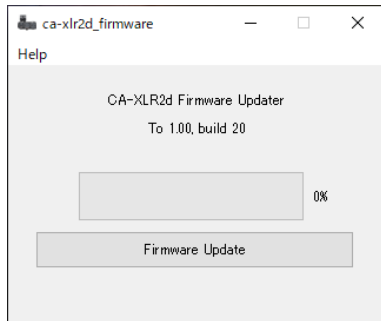
### For Windows

1. Double-click "ca-xlr2d\_firmware.exe" inside the folder uncompressed earlier to launch the updater.

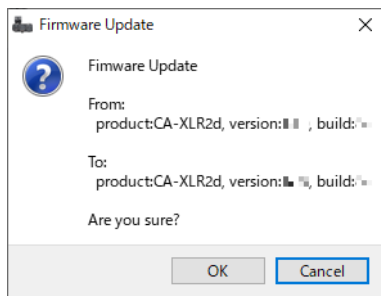
#### ATTENTION

Leave "ca-xlr2d\_firmware.exe" in the uncompressed folder when launching it.

2. After the updater launches, the following screen will appear. Click the "Firmware Update" button.

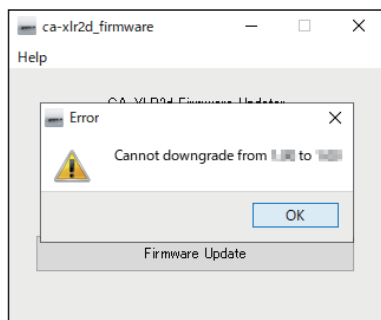


3. The current firmware version is shown under "From" and the update version is shown under "To".

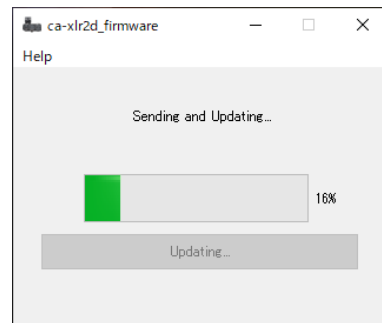


#### NOTE

If the firmware version for the update is older than the current firmware version shown by the updater, updating will not be possible. In this case, the following screen will be shown. After clicking on the "OK" button, click on the  button on the upper right of the windows to close the screen.



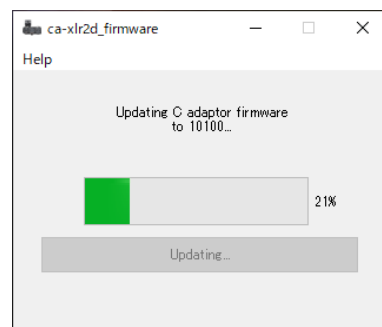
4. Click the "OK" button on the update execution confirmation screen to start the firmware update.





#### ATTENTION

Do not disconnect the USB cable or turn the computer off during the update. Doing so could corrupt the firmware, making updating and ordinary operation impossible.

5. If a shoe mount adapter (CA-AK1-C/CA-AK1-F) is already connected when the unit firmware update completes, the firmware of that adapter will start updating automatically.

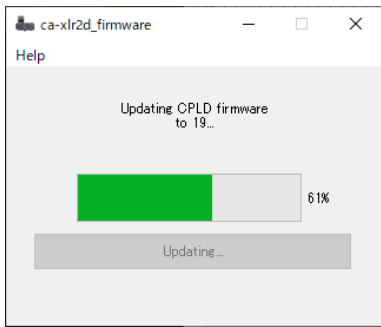


- When the firmware of a shoe mount adapter is being updated, the  and  POWER SUPPLY indicators will blink alternately.

#### NOTE

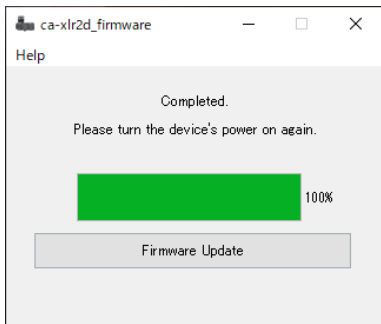
The cold shoe mount adapter (CA-AK1-AN) has no firmware installed. Therefore, even if it is attached to the main unit, the firmware update of the shoe mount adapter will not be executed and the next control firmware update will be executed.

- Next, the control firmware update will be executed automatically.

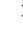


- When the control firmware is being updated, the INPUT 1/3 and INPUT 2 OL (overload) indicators will blink alternately.

- The following screen will appear when firmware updating finishes.



This completes updating.

- Click the  button at the top right to close the window and disconnect the USB cable from this unit and the computer.

### NOTE

Updating will take about 8 minutes at most.

### For Mac

- Double-click the disk image file that you just downloaded.



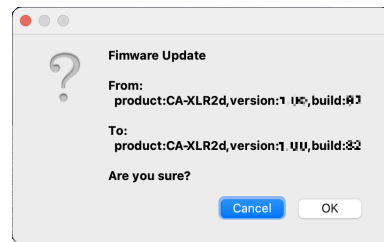
- Double-click the application shown below to launch the firmware updater.




- Click the "Firmware Update" button on the updater screen.

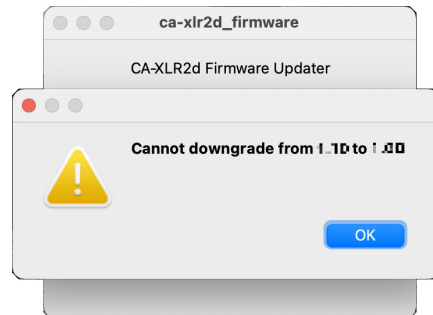


- The current firmware version is shown under "From" and the update version is shown under "To".

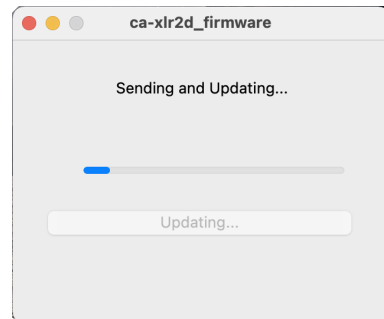


### NOTE

If the firmware version for the update is older than the current firmware version shown by the updater, updating will not be possible. In this case, the following screen will be shown. After clicking on the "OK" button, click on the  button on the upper left of the windows to close the screen.



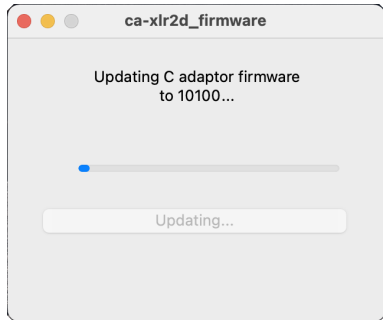
- Click the "OK" button to start the firmware update.



### ATTENTION

Do not disconnect the USB cable or turn the computer off during the update. Doing so could corrupt the firmware, making updating and ordinary operation impossible.

6. If a shoe mount adapter (CA-AK1-C/CA-AK1-F) is already connected when the unit firmware update completes, the firmware of that adapter will start updating automatically.

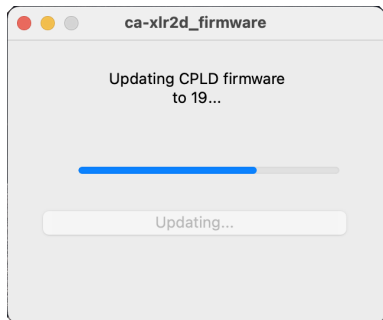


- When the firmware of a shoe mount adapter is being updated, the and POWER SUPPLY indicators will blink alternately.

**NOTE**

The cold shoe mount adapter (CA-AK1-AN) has no firmware installed. Therefore, even if it is attached to the main unit, the firmware update of the shoe mount adapter will not be executed and the next control firmware update will be executed.

7. Next, the control firmware update will be executed automatically.



- When the control firmware is being updated, the INPUT 1/3 and INPUT 2 OL (overload) indicators will blink alternately.

8. The following screen will appear when firmware updating finishes.



This completes the update.

9. Click the button at the top left to close the window and disconnect the USB cable from this unit and the computer.

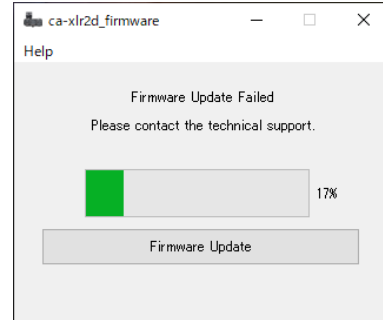
**NOTE**

Updating will take about 8 minutes at most.

## Trouble during firmware updating

- USB cable disconnected during firmware updating
- Power supply interrupted during firmware updating

If updating fails for one of the above reasons, the following screen will appear.



- If this occurs, click the button at the top right to close the screen, and disconnect the USB cable from the unit.
- Use the USB cable to connect the unit and the computer again.
- Return to "Updating the firmware" on page 4 and conduct the procedures from the beginning.