

## About this Driver (for OS X Mavericks)

The following drivers for OS X Mavericks (10.9) are being released.

### Versions

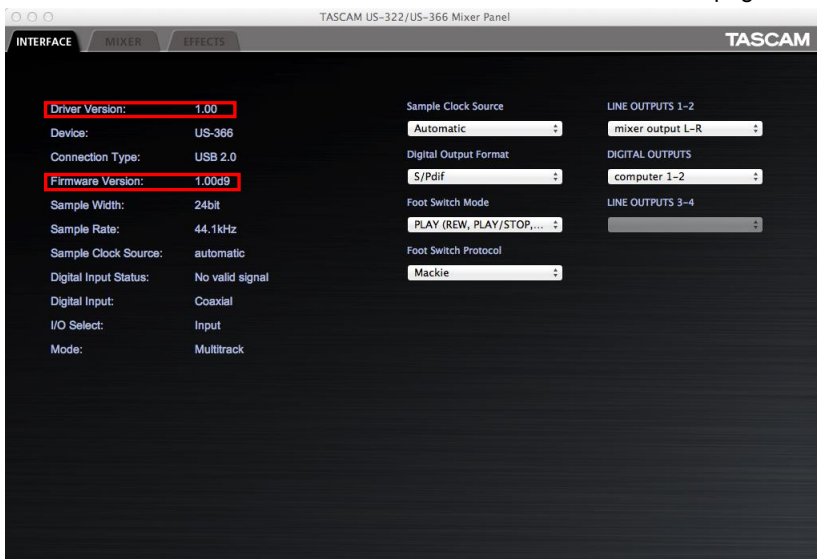
	OS	Driver	Firmware Updater	
<b>US-322</b>	<b>OS X Mavericks (10.9)</b>	<b>3.01</b>	<b>1.02 [Not updated]</b>	
<b>US-366</b>	<b>OS X Mavericks (10.9)</b>	<b>3.01</b>	<b>1.02 [Not updated]</b>	

Please use these drivers with the specified firmware version only.

## Confirmation of Driver Version and Firmware Version

The driver and firmware versions you are currently using should be checked to determine if updates are required. If the driver is being installed for the first time, please check the firmware version after installing the driver.

1. Press the MIXER PANEL button on the unit to open the Mixer Panel.
2. Click the "INTERFACE" tab to open the "INTERFACE" page.
3. Check the "Driver Version" and "Firmware Version" items on this page



[US-366 Mixer Panel – INTERFACE tab screen]

## Caution for driver installation

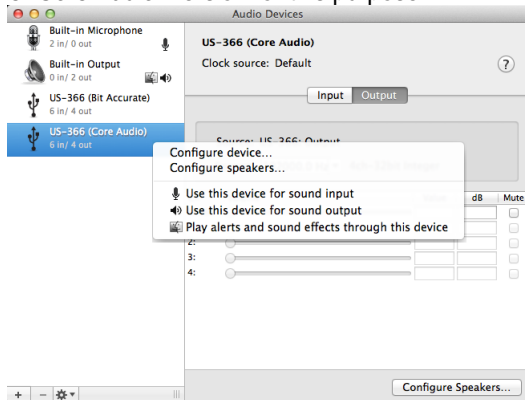
Prior to installing a new driver, please make sure to delete any previous driver files first.

## Driver selection

This new driver for OS X Mavericks (10.9) exposes the audio interface to the OS as two separate types. The product name appears twice, once with (Bit Accurate) and once with (Core Audio)

## Audio MIDI Settings

Within the Audio MIDI Settings, Audio Devices, the "Bit Accurate" device will not allow you to select "Use this device for sound input", "Use this device for sound output" or "Play alerts and sound effects through this device". Please select the "Core Audio" version for this purpose.



[Menu that appears when the Core Audio version is selected and the right click menu opened]

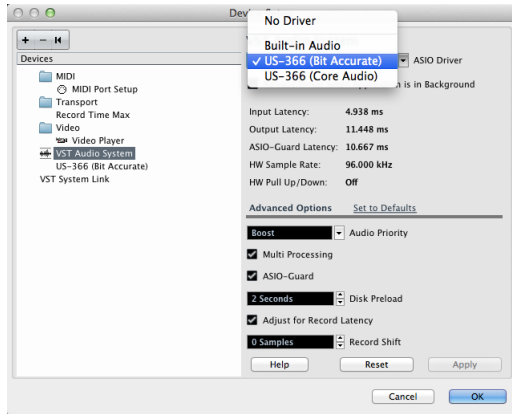
## Digital Input (US-366)

To use the DIGITAL IN input, select "Sample Clock = Automatic" in the Control Panel. It will not work correctly when Sample Clock is set to "Internal".

Refer to the Control Panel instructions in the Owner's Manual.

## Using DAW Software such as Cubase

For Cubase and other DAWs, please use the Bit Accurate type when available.



[Example : Selecting the ASIO driver from within Cubase]

The Bit Accurate driver allows for the best stability in playback and recording within a DAW, but Mac applications that were downloaded from the Mac App Store are not allowed to use this method. For those applications, you must select the Core Audio version of the product's device.

## How to update the Driver and Firmware

Follow the procedures below to install the latest driver and then update the firmware.

### About Gatekeeper

There are some cases where a caution window can appear during the installation, depending on the Gatekeeper setting.

#### 0 In case Gatekeeper has been set to "Mac App Store".

The security caution "(filename) can't be opened because it was not downloaded from the Mac App Store." may appear.



In this case, close the caution window by clicking "OK", then click on the file while holding the Control key. Select the "Open" button.

The Caution window "(Filename) is not from the Mac App Store. Are you sure you want to open it?" will appear. Click the "Open" button.



There are cases when that same caution will appear when the Gatekeeper has been set to something other than "Allow the application from Mac App Store only."

There are also cases where you can't open the file and a message will appear saying "TASCAM US... can't be opened because it was not downloaded from the Mac App Store".

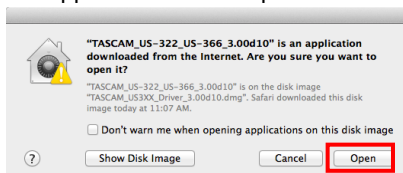


In this instance, execute the file after copying it from the original folder to a different folder (or your desktop).

You can also execute the file after changing the Gatekeeper setting to "Mac App Store and identified developers".

#### 0 When the Gatekeeper has been set to something other than "Mac App Store".

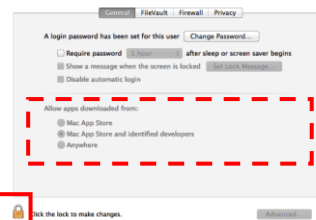
The following security caution "(Filename) is an application downloaded from the Internet. Are you sure you want to open it?" can appear. Click the "Open" button.




#### 0 To change the Gatekeeper setting

Gatekeeper settings can be changed via the following path: "System Preferences" "Security & Privacy" "General" "Allow application downloaded from:"

To change the setting, click the "lock" icon at the bottom left, then input your system password.



This Lock is re-applied if the system environment setting is closed by the  button or command+Q etc, or moving away from this panel by clicking "Show all".

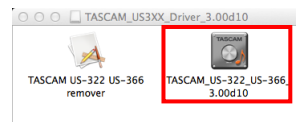
#### Caution

- Your computer is exposed to a certain level of risk (downloading unsigned apps) by changing the Gatekeeper setting.
- If the security level was changed to "Anywhere" (for the purposes of downloading the driver and firmware files), please return the selection to either "Mac App Store" or "Mac App Store and identified developers" after completing the driver and/or firmware installation.

### Update procedures for driver

Before beginning the installation, disconnect the unit from the USB cable.

1. Download the latest driver for your operating system from the TASCAM website (<http://tascam.com/>).
2. Double-click the Disc image file ("dmg" file) you downloaded, then double-click the "TASCAM US..." file in the opened folder.



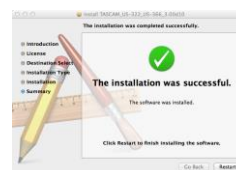
#### Note

There are times that the zip file you download will not be automatically unzipped depending on your computer environment. In this case, double-click the disc image file after unzipping the zip file.

3. Proceed with the installation by following the install application's screen instructions.



4. When the following screen appears, check if any other running applications have unsaved data before clicking on "Reboot" to restart the computer to make the driver installation effective.



Restart the computer to complete the driver installation.

## Updating procedures for firmware

After completing the installation of the driver and restarting the computer, update the firmware.

1. Download "Ver.x.xx Firmware updater (For Mac OS)" from the TASCAM website (<http://tascam.com/>).
2. Double-click the updater to start the process.

### Note

*There are times that the zip file you download will not be automatically unzipped depending on your computer environment. In this case, double-click the disc image file after unzipping the zip file.*

3. Connect the unit to the computer by USB, and confirm that the current driver version is shown.



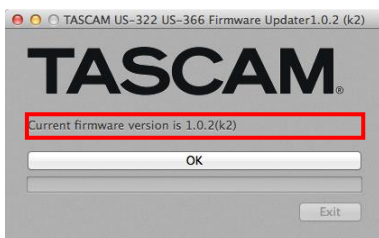
4. Click the "write firmware" button to start the update.



### Caution

*Do not disconnect the USB cable during the update.*

5. When the following message appears after the process completes, click the "OK" button.



### Caution

*If "OK" is not shown, the update did not complete successfully. Click the "write firmware" button again to execute the update.*

6. The message in step 5 will disappear, so clicking the "Exit" button will complete the update.

